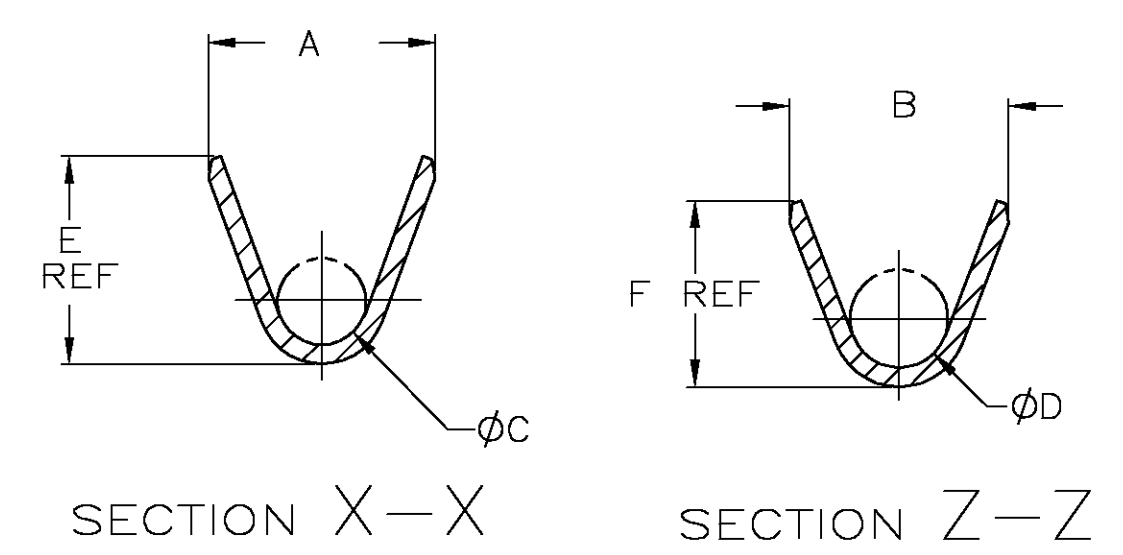
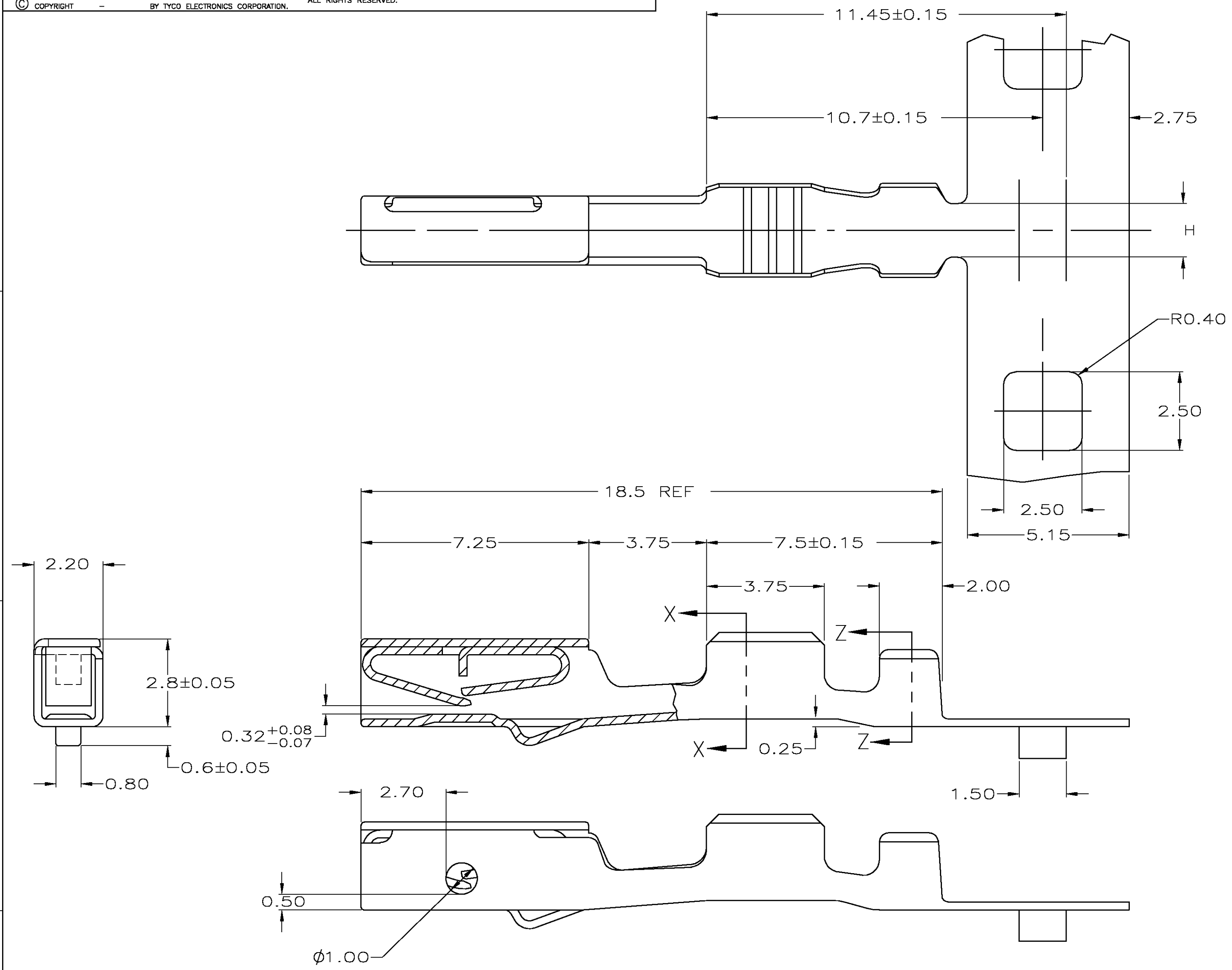


THIS DRAWING IS UNPUBLISHED. RELEASED FOR PUBLICATION
 © COPYRIGHT BY TYCO ELECTRONICS CORPORATION. ALL RIGHTS RESERVED.

LOC	DIST	REVISIONS				
P	LTR	DESCRIPTION	DATE	DWN	APVD	
FX	00	C	REVISED PER EC OK80-0038-04	11FEB2004	DLD	CBP



638187-2 REELED LEFT TO RIGHT, OFF TOP, CARRIER INSIDE									638187-4
638187-1 REELED LEFT TO RIGHT, OFF TOP, CARRIER INSIDE									638187-3
1.6	1.80	2.04	1.45	0.90	2.40	2.30	0.35	22	638187-2
1.6	1.80	2.04	1.45	0.90	2.40	2.30	0.34-0.36		
1.7	2.46	2.75	1.30	1.20	2.90	3.00	0.50	18-20	638187-1
1.7	2.46	2.75	1.30	1.20	2.90	3.00	0.75		
1.7	2.46	2.75	1.30	1.20	2.90	3.00	1.00		
1.7	2.46	2.75	1.30	1.20	2.90	3.00	--		
H	F	E	D	C	B	A	METRIC WIRE SIZE	AWG	PART NUMBER

1 MATERIAL: 0.25 THK COPPER ALLOY, PRE-PLATED WITH 0.0008 MIN THK BRIGHT TIN.

THIS TYCO PROPRIETARY INFORMATION IS CONFIDENTIAL AND IS DISCLOSED TO YOU ON CONDITION THAT NO FURTHER DISCLOSURE IS MADE BY YOU TO ANYONE OTHER THAN TYCO PERSONNEL WITHOUT WRITTEN AUTHORIZATION FROM TYCO ELECTRONICS, HARRISBURG, PA.

THIS DRAWING IS A CONTROLLED DOCUMENT.

DWN	J MCNEAL	04-09-98
CHK	C PAUL	04-09-98
APVD	C PAUL	04-09-98
PRODUCT SPEC	RECEPTACLE CONTACT, DUAL BEAM	
APPLICATION SPEC	114-6063	
WEIGHT	-	
CUSTOMER DRAWING	SCALE 4:1	SHEET 1 OF 1

tyco Electronics Tyco Electronics Corporation Harrisburg, Pa 17105-3608

SIZE A2 CAGE CODE 00779 DRAWING NO C=638187 RESTRICTED TO -